

## Crane Truck

# Stiff / Knuckle Crane



- Stiff Crane (T023~T038) can be mounted on both deck and C/Cab frame without deck cut
- Stiff Crane (160T ~ 320T) is mounted on C/Cab frame; mounting requires a deck cut (differs by model/average 1,200 ~ 1,500mm cut)
- Knuckle Crane is mounted on C/Cab Frame, and deck is 100% cut (differs by model/average 900 ~ 2,000mm cut)
- Stiff / Knuckle Crane can be mounted on any type of special vehicle (contact the Special Vehicle Team for more information)
- Hook / Standard outrigger is mounted as a standard
- PTO is a mandatory option when ordering crane trucks

## Specifications

		Stiff Crane		Knuckle Crane	
Pic.		Single-Folding		Double-Folding	
		Lifting Capa.	Application	Lifting Capa.	Application
Stiff	T-CLX023-2	2.4ton	ALL	-	-
	T-CLX029-2	2.8ton	ALL	-	-
	T-CLX038-3	3.5ton	ALL	-	-
	T-080-5	7.7ton	ALL	-	-
	160T	15.0ton	Above HD160/170	-	-
	190T	18.1ton	Above HD250	-	-
	270T	27.0ton	Above HD260	-	-
	320T	31.5ton	Above HD320	-	-
Knuckle	X-CLX044B	-	-	3.5ton	Above HD65 / HD72
	X-CLX078B	-	-	6.8ton	Above HD120
	X-CLX088B	-	-	8.0ton	Above HD120
	X-CLX128B	-	-	11.5ton	Above HD170
	X-CLX148B	-	-	13.7ton	Above HD170
	X-CLX178B	-	-	16.0ton	Above HD250
Use	High place work, Construction sites Miscellaneous materials transport			Materials transport, Materials assembly Mountainous areas, Recyclable materials transport	

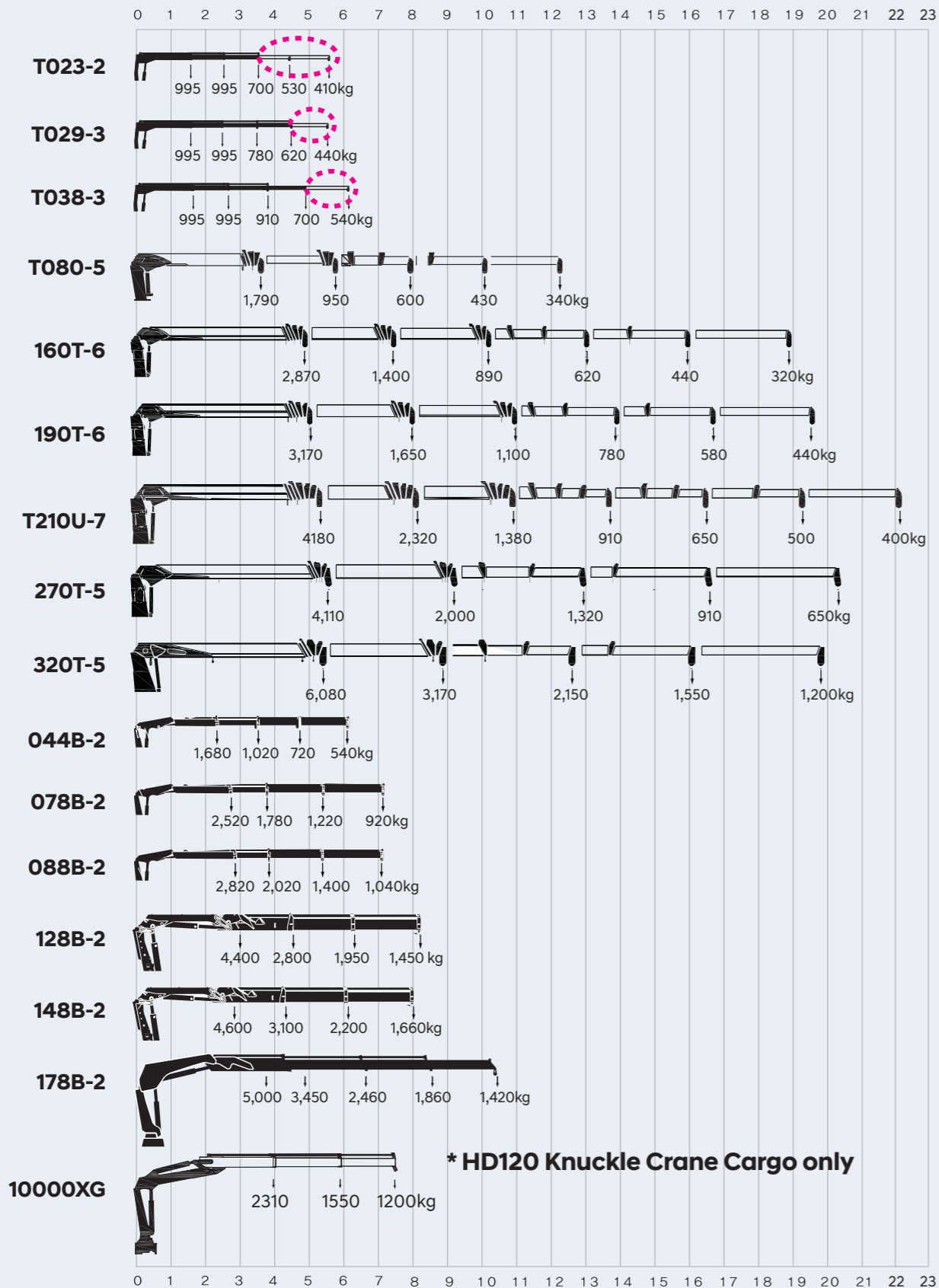
## HIAB T-Crane Specifications

VERSION		HIAB T080	HIAB 160T	HIAB 190T	HIAB 270T	HIAB 320T
Lifting capacity	tm	7.7	15.0	18.1	27.0	34.0
Outreach / Lifting Capa. Hydraulic extension	m/kg	2.6m - 2,900	1.4m - 6,500	1.6m - 8,000	1.7m - 10,000	1.5m - 10,000
		3.4m - 1,820	4.5m - 2,870	5.1m - 3,170	5.5m - 4,110	5.2m - 6,570
		5.6m - 960	7.3m - 1,400	7.9m - 1,650	9.2m - 2,000	8.8m - 3,460
		7.8m - 630	10.2m - 890	11.8m - 1,100	12.9m - 1,320	12.4m - 2,310
		10.0m - 450	13.0m - 620	13.7m - 780	16.6m - 910	16.0m - 1,700
		12.3m - 340	15.9m - 440	16.6m - 580	20.3m - 650	19.6m - 1,300
			18.7m - 320	19.5m - 440		
Max. Working radius	m	12.3	18.7	19.5	20.3	19.6
Max. working height	m	13.5	19.9	20.6	21.4	20.8
Recommended oil flow	ℓ/min	50	56	63	68	80
Max. Working pressure	bar	200	200	210	210	200
Slewing Angle	°	Infinite rotation				
Recommended Domestic mounting chassis	ton	2.5	7	7	17	19

Specifications are subject to change without prior notice

# Crane Truck (Stiff / Knuckle Crane)

Unit : m



\* Specifications are subject to change without prior notice.

\* Circled part should be separately with extension option.

Stiff / Knuckle Crane

## Body



**X-CLX044 ~  
X-CLX088**  
HD65 ~ HD120  
Knuckle  
Note: Standard



**X-CLX128 ~  
X-CLX148**  
Above HD120  
Knuckle  
Note: Standard



**X-CLX178**  
Above HD250  
Knuckle  
Note: Standard



**T-080-5**  
Above HD65  
Stiff  
Note: Standard



**160T-6 / 190T-6**  
160T : Above HD120  
190T : Above HD170  
Stiff  
Note: Standard



**270T-5 / 320T-5**  
270T : Above HD260  
320T : Above HD320  
Stiff / Korea  
Note: Standard



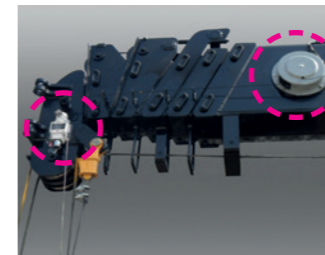
**T-CLX023-2 /  
T-CLX 029-2**  
HD65 ~ HD120  
Stiff  
Note: Standard



**10000XG**  
Above HD120  
Knuckle  
\* Include Grapple  
Note: Standard



**Assistance outrigger**  
Stiff / Knuckle Crane  
160T,190T at HD120/170 -  
mandatory option,  
160T,190T at above HD250 -  
option,  
270T,320T - Standard  
Note: Option 1



**Safety system**  
Stiff Crane  
Note: Option 2

\* Kindly contact the Special Vehicle Team for more detailed crane specs or photos.

### Option 1

- Standard outrigger is included but assistance outrigger is available as an option to ensure safety.
- It is installed at the rear and front of C/Cab when the crane is mounted at the front of C/Cab and over the deck at the rear, respectively.

### Option 2

- It consists of sensors, electrical control unit and winch safety warning device (wire winding sensor)
- Contact the Special Vehicle Team to ensure this option complies with your local safety regulations as they differ considerably from country to country.

## Crane Truck

# HD120 Crane Truck

- Available only in the HD120 X-LONG, kindly contact the Special Vehicle Team for other types.
- Can be additionally reinforced to suit the operating environment.
- PTO is a mandatory option when ordering crane trucks



## Crane Truck

# Wrecker Truck

- The 3-step boom is standard but can be replaced with a 2-step at the customer's request
- PTO is a mandatory option when ordering wrecker trucks



### Domex high tension box

HD120 crane truck  
Box Thickness :  
Front/Side : 3.2mm,  
Floor : 4mm  
Box payload : 4,000 kg

Note: Standard



### Knuckle crane (Hiab 10000XG)

HD120 crane truck  
Lifting Capacity : 9.7 ton/m  
Outreach : 7.6m  
Slewing Angle : 400 °  
Max. Working Pressure : 260 bar

Note: Standard



### Rear pusher axle

HD120 crane truck

Note: Standard



### Grapple

HD120 crane truck  
\* Capa.: 0.35m<sup>3</sup>

Note: Standard



### Crane control seat

HD120 crane truck

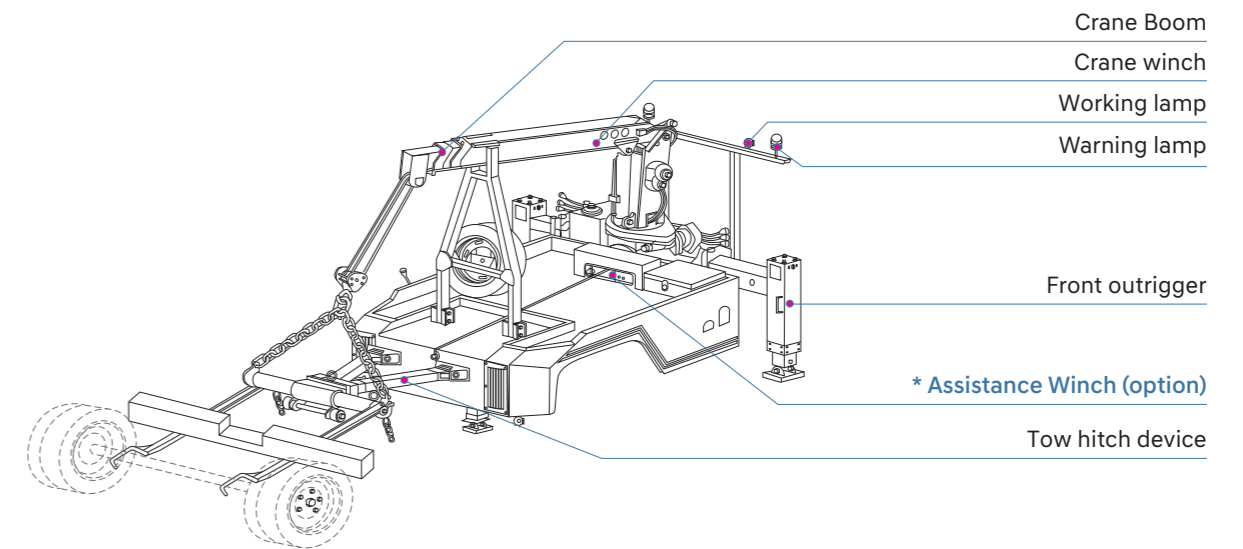
Note: Standard



### Rear outrigger

HD120 crane truck

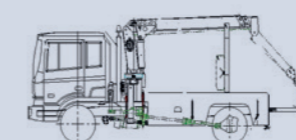
Note: Standard



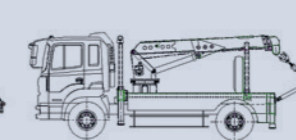
## Standard Wrecker Configurations



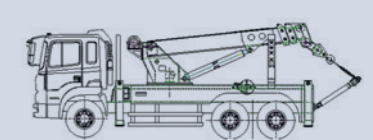
HD 65 / 72 Wrecker Truck



HD 120 Wrecker Truck



HD 170 Wrecker Truck



HD 260 Wrecker Truck

## Body



### Boom crane

Wrecker  
HD65 / 72 / 120 / 170 / 260  
\* Include Crane control seat in HD260  
**Note: Standard**



### Tow hitch device

Wrecker  
HD65 / 72 / 120 / 160 / 260

**Note: Standard**



### Front outrigger

Wrecker  
HD65 / 72 / 120 / 160 / 260

**Note: Standard**



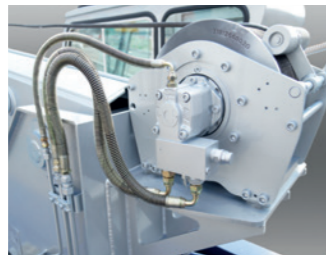
### Warning / work lamp

Wrecker  
HD65 / 72 / 120 / 160 / 260  
\* Warning lamp : 2ea,  
Working lamp : 2ea  
**Note: Standard**



### Warning / work lamp switch panel

Wrecker  
HD65 / 72 / 120 / 160 / 260  
**Note: Standard**



### Crane winch

Wrecker  
HD65 / 72 / 120 / 160 / 260

**Note: Standard**



### Crane lever

Wrecker  
HD65 / 72 / 120 / 160 / 260

**Note: Standard**



### Assistance winch

Wrecker  
Above HD120

**Note: Option 1**



### Underlift / underlift control

Wrecker  
Above HD120

**Note: Option 2**



### Crane control cabin

Wrecker  
Above HD260

**Note: Option 3**



## Body

### Option 1 (Wrecker)

- Used when the direction of vehicle to be towed does not suit the tow device or towing on hills etc.
- The winch mounting position adjoins the boom crane but can be changed at the customer's request.

### Option 2 (Wrecker)

- Hydraulic hitch raises one axle of the towed vehicle allowing it to be towed on remaining tires.
- The rear outrigger is mounted as standard when this option is selected.

